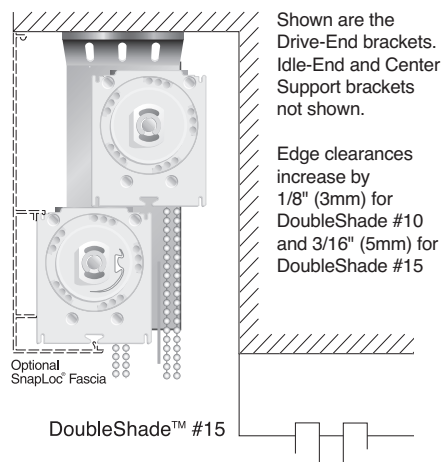
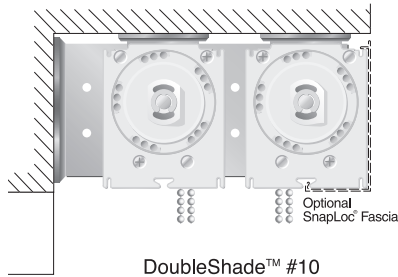


# MechoShade® DoubleShade® Brackets – #10

ThermoVeil® or EuroVeil®  
SunScreens with Blackout  
ShadeCloth on a Single Bracket  
with SnapLoc® Fascia (optional).



DoubleShades® have all the same features of the standard Mecho®/5 bracket, plus allow both sun screen and Room Darkening on a single bracket.

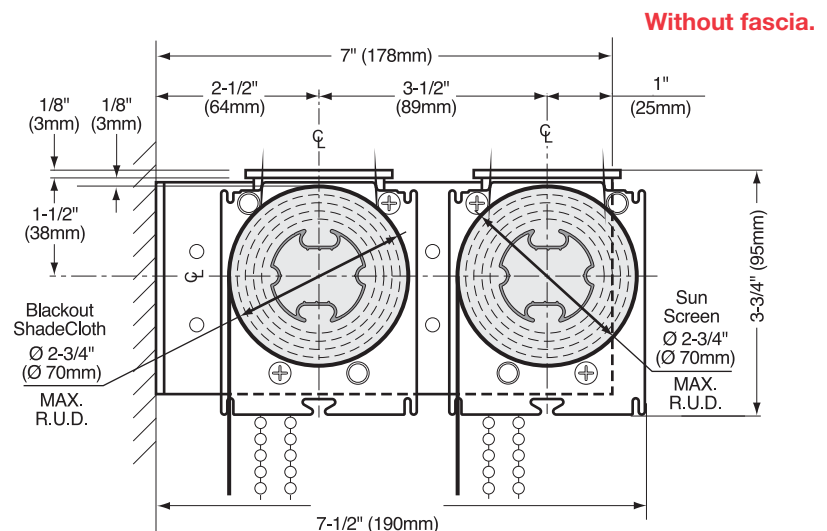
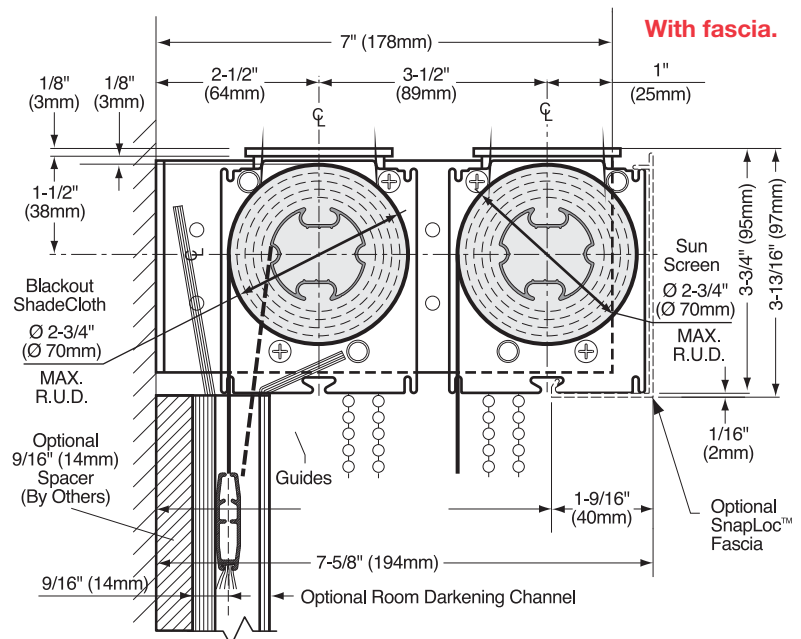
## Compact Size

DoubleShade's compact size allows two shades to fit in a smaller room projection than two individually installed shades on the same window.

## Ease of Installation

DoubleShades provide faster, easier, more economical installation of two shades per window. The mounting brackets require less measuring and are pre-spaced to insure proper alignment of both shades in relation to each other.

## Mecho®/5 DoubleShade® Bracket #10, with and without fascia.



- DoubleShade Brackets require that both the solar and blackout operating brackets on a DoubleShade assembly have the same right-hand drive or left-hand drive orientation.
- Shade height, span and fabric determine bracket and tube selection. Please see the Maximum Shade Height Guide for DoubleShades on page 2.14.

Continued 

MechoShade Systems, Inc.  
42-03 35th Street, Long Island City, NY 11101  
Telephone: 718-729-2020  
Fax: 718-729-2941 / 800-899-8081

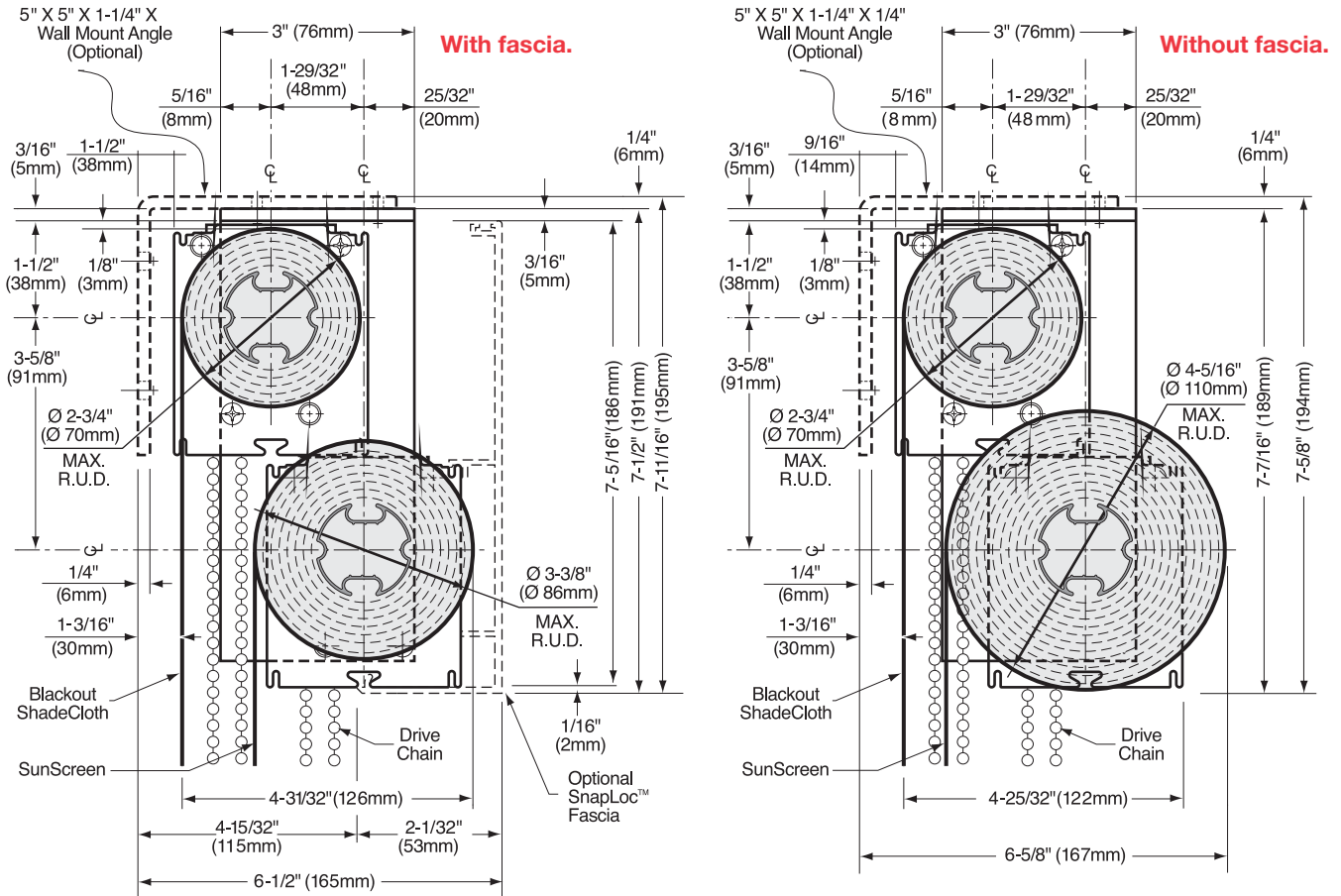
E-mail: [info@mechoshade.com](mailto:info@mechoshade.com)  
Internet Web Site: [www.mechoshade.com](http://www.mechoshade.com)

2.13  
MS2200 - 01/01/08



# MechoShade® DoubleShade® Brackets – #15

## Mecho®/5 DoubleShade® Bracket #15, with and without fascia.



Maximum Shade Height Guide for DoubleShades

	No Battens		One (1) Batten		Two (2) Battens	
	1-1/2" (38mm) SnapLoc® Tube	1-7/8" (48mm) SnapLoc® Tube	1-1/2" (38mm) SnapLoc® Tube	1-7/8" (48mm) SnapLoc® Tube	1-1/2" (38mm) SnapLoc® Tube	1-7/8" (48mm) SnapLoc® Tube
<b>DoubleShade #10**</b>						
Blackout (w/wo fascia)	200" (508cm)*	200" (508cm)*	200" (508cm)*	164" (417cm)	192" (488cm)	124" (315cm)
ThermoVeil® (w/wo fascia)	131" (333cm)	97" (246cm)	111" (282cm)	77" (196cm)	92" (234cm)	58" (147cm)
EuroVeil® (w/wo fascia)	159" (404cm)	118" (300cm)	135" (343cm)	95" (241cm)	112" (284cm)	71" (180cm)
<b>DoubleShade #15***</b>						
Blackout (w/wo fascia)	200" (508cm)*	200" (508cm)*	200" (508cm)*	164" (417cm)	192" (488cm)	124" (315cm)
ThermoVeil (with fascia)	200" (508cm)*	197" (500cm)	200" (508cm)*	173" (439cm)	184" (476cm)	150" (380cm)
ThermoVeil (without fascia)	200" (508cm)*	200" (508cm)*	200" (508cm)*	200" (508cm)*	200" (508cm)*	200" (508cm)*
EuroVeil (with fascia)	200" (508cm)*	200" (508cm)*	200" (508cm)*	200" (508cm)*	200" (508cm)*	181" (460cm)
EuroVeil (without fascia)	200" (508cm)*	200" (508cm)*	200" (508cm)*	200" (508cm)*	200" (508cm)*	200" (508cm)*

\* Actual maximum heights may be greater, but not recommended. \*\* DoubleShade #10: End caps not available. \*\*\* Shade #15: Channels are not available.

MechoShade Systems, Inc.  
42-03 35th Street, Long Island City, NY 11101  
Telephone: 718-729-2020  
Fax: 718-729-2941 / 800-899-8081

E-mail: [info@mechoshade.com](mailto:info@mechoshade.com)  
Internet Web Site: [www.mechoshade.com](http://www.mechoshade.com)

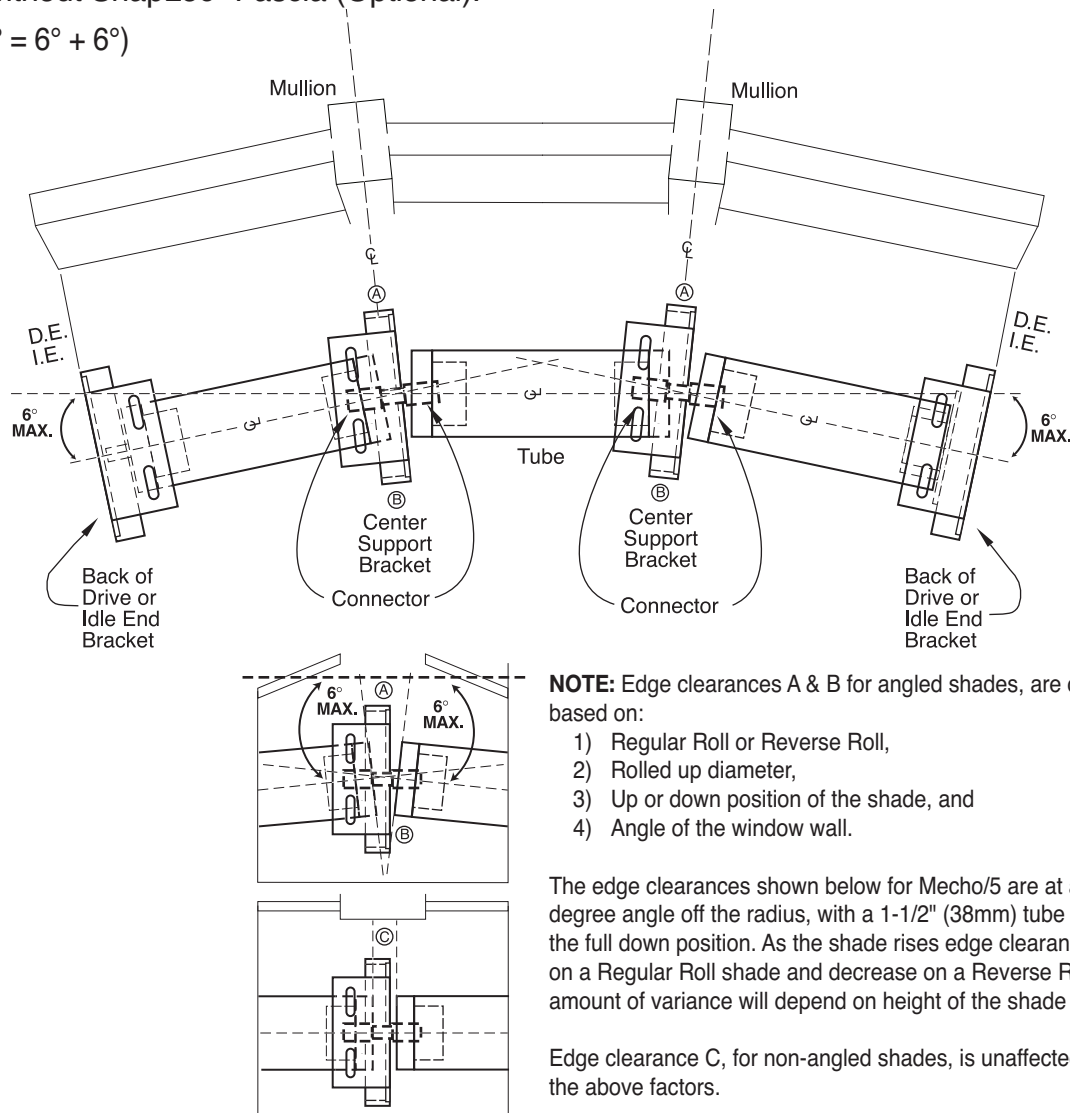
**2.14**  
MS2200 - 01/01/08



# MechoShade® <12° Radius Center Support

With or without SnapLoc® Fascia (Optional).

(Up to 12° = 6° + 6°)



The following < 12° Radius Center Support applications use the standard MechoShade® brackets, tube connector and tube plugs.

< 12° Center Support Bracket model	Center Support Edge Clearances			Maximum Roll Up Diameter
	(A)	(B)	(C)	
Mecho®/5 Wide	3/4" (19mm)	7/16" (11mm)	5/8" (16mm)	2-3/4" (60mm) with or without fascia
Mecho/5 Pocket	3/4" (19mm)	7/16" (11mm)	5/8" (16mm)	4" (102mm) No fascia
Mecho/5 Extended	3/4" (19mm)	7/16" (11mm)	5/8" (16mm)	3-7/16" (87mm) with fascia
	3/4" (19mm)	7/16" (11mm)	5/8" (16mm)	5" (127mm) without fascia
Mecho SlimLine™	3/4" (19mm)	7/16" (11mm)	5/8" (16mm)	2-1/4" (57mm) with fascia
	3/4" (19mm)	7/16" (11mm)	5/8" (16mm)	2-3/4" (60mm) without fascia

Not available for DoubleShade brackets.  
Call for shop drawings.

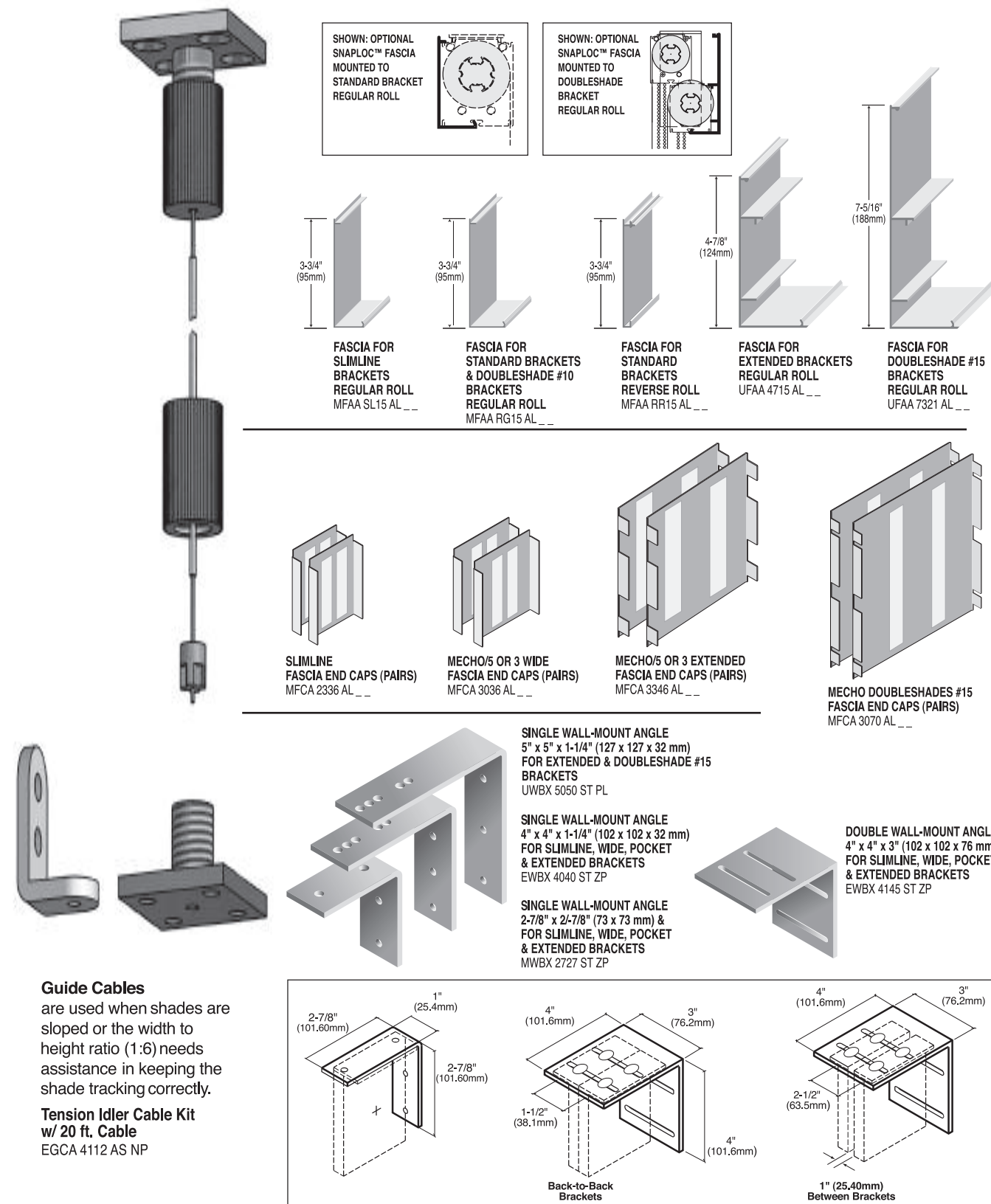
MechoShade Systems, Inc.  
42-03 35th Street, Long Island City, NY 11101  
Telephone: 718-729-2020  
Fax: 718-729-2941 / 800-899-8081

E-mail: [info@mechoshade.com](mailto:info@mechoshade.com)  
Internet Web Site: <http://www.mechoshade.com>



2.15  
MS2200 - 01/01/08

# Other MechoShade® Components & Optional Accessories



MechoShade Systems, Inc.  
42-03 35th Street, Long Island City, NY 11101  
Telephone: 718-729-2020  
Fax: 718-729-2941 / 800-899-8081

E-mail: [info@mechoshade.com](mailto:info@mechoshade.com)  
Internet Web Site: <http://www.mechoshade.com>



**2.16**  
MS2200 - 01/01/08

# New, Improved Lift-Assist Mechanism™ (LAM™)

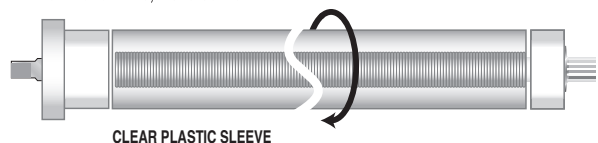
Optional Lift-Assist Mechanism™ for heavy, oversized or multibanded manual shades.

MechoShade's optional Lift-Assist Mechanism™ (LAM™) enables users to lift heavy, oversized or multibanded manual shades weighing between 10 and 20 lbs. (4.5 kg and 9.0 kg) or more. In many cases a shade that formerly required motorization can now be lifted with the Lift-Assist Mechanism. The Lift-Assist Mechanism can also provide exceptional lifting capacity for shades less than 10 pounds. An important consideration for the frail or infirmed.

The LAM system is comprised of a spring assembly inside the shade tube and one of a wide range of LAM idle-end brackets designed to wind the spring in the proper direction for regular or reverse roll for both right-hand or left-hand drive. LAM's are available for the Mecho®/5 in Wide, Pocket and Extended sizes and the Mecho® SlimLine™ Bracket.

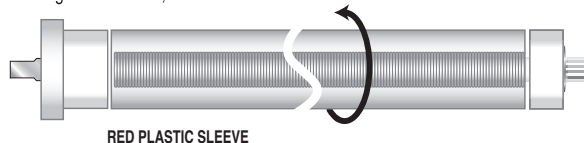
## Clockwise Winding LAM Springs

Right-Hand Drive, Regular Roll  
Left-Hand Drive, Reverse Roll



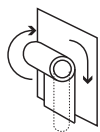
## Counter-Clockwise Winding LAM Springs

Left-Hand Drive, Regular Roll  
Right-Hand Drive, Reverse Roll

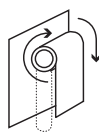


Spring winding is indicated on the spring by color code of plastic sleeve.

### Clockwise Winding Springs

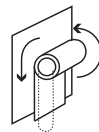


Regular Roll  
Right-Hand Drive  
LAM Brackets

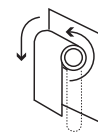


Reverse Roll  
Left-Hand Drive  
LAM Brackets

### Counter-Clockwise Winding Springs



Regular Roll  
Left-Hand Drive  
LAM Brackets



Reverse Roll  
Right-Hand Drive  
LAM Brackets

LAM ASSEMBLY FOR  
1-1/2" and 1-7/8" (38mm and 48mm)  
SNAPLOC TUBES

Clockwise Winding LAM Spring for  
RH Drive, Regular Roll or LH Drive, Reverse Roll  
(210 coils)  
MLAA 0210 DS SC

Counter-Clockwise Winding LAM Spring for  
LH Drive, Regular Roll or RH Drive, Reverse Roll  
(210 coils)  
MLAA L210 DS SC

LAM ASSEMBLY FOR  
1-3/4" (44mm)  
SNAPLOC TUBE

Clockwise Winding LAM Spring for  
RH Drive, Regular Roll or LH Drive, Reverse Roll  
(248 coils)  
MLAA R248 24 SC

Counter-Clockwise Winding LAM Spring for  
LH Drive, Regular Roll or RH Drive, Reverse Roll\*  
(248 coils)  
MLAA L248 24 SC

LAM ASSEMBLY FOR  
2-1/8" (54mm)  
SNAPLOC TUBE

Clockwise Winding LAM Spring for  
RH Drive, Regular Roll or LH Drive, Reverse Roll  
(248 coils)  
MLAA R248 24 2S

Counter-Clockwise Winding LAM Spring for  
LH Drive, Regular Roll or RH Drive, Reverse Roll\*  
(248 coils)  
MLAA L248 24 2S

MechoShade Systems, Inc.  
42-03 35th Street, Long Island City, NY 11101  
Telephone: 718-729-2020  
Fax: 718-729-2941 / 800-899-8081

E-mail: [info@mechoshade.com](mailto:info@mechoshade.com)  
Internet Web Site: [www.mechoshade.com](http://www.mechoshade.com)

604/2  
REVISION  
2.17  
MS2200 - 01/01/08





# The MechoShade® Return Air “No Cost Pocket”™”

## “No Cost Pocket”™”

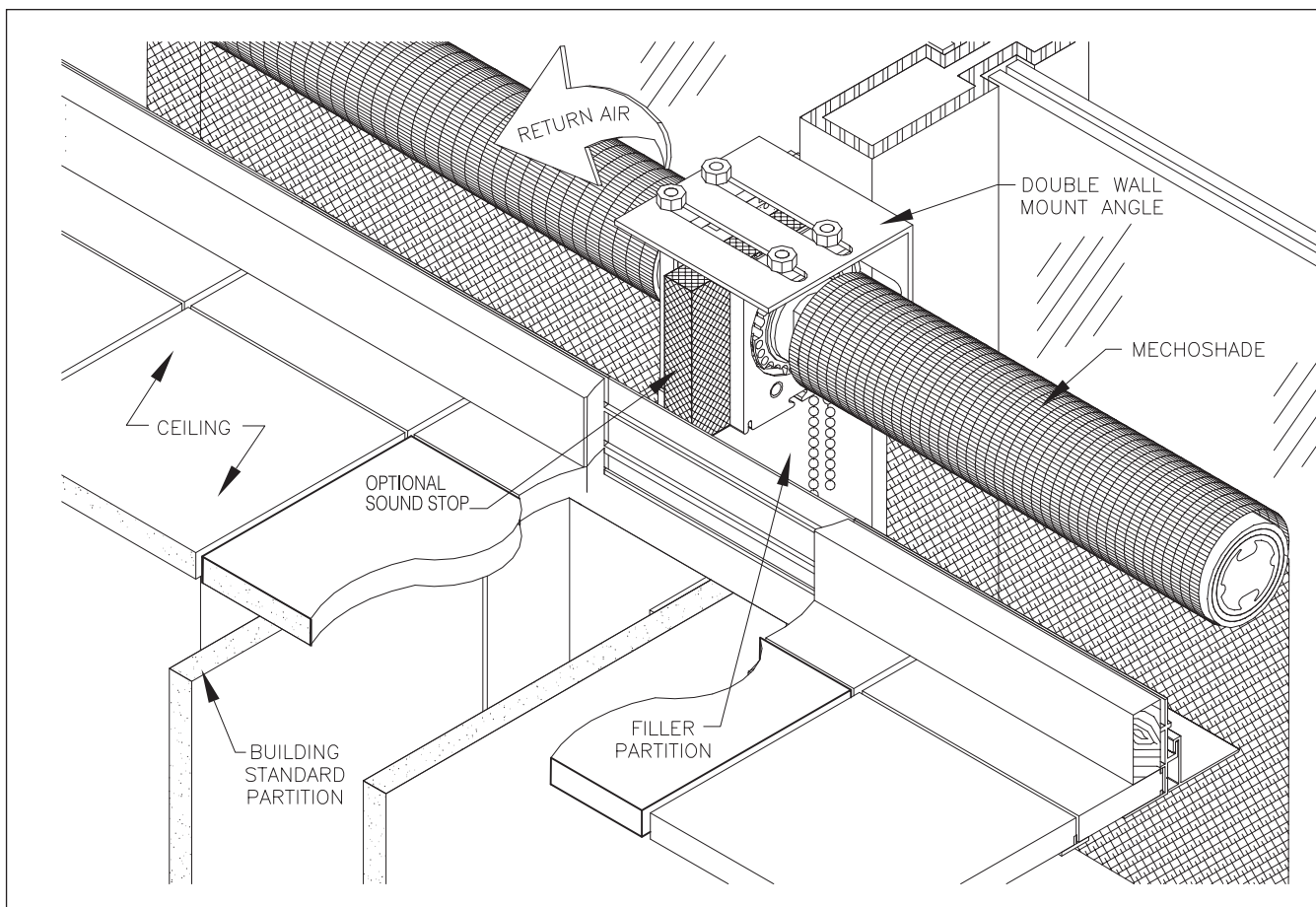
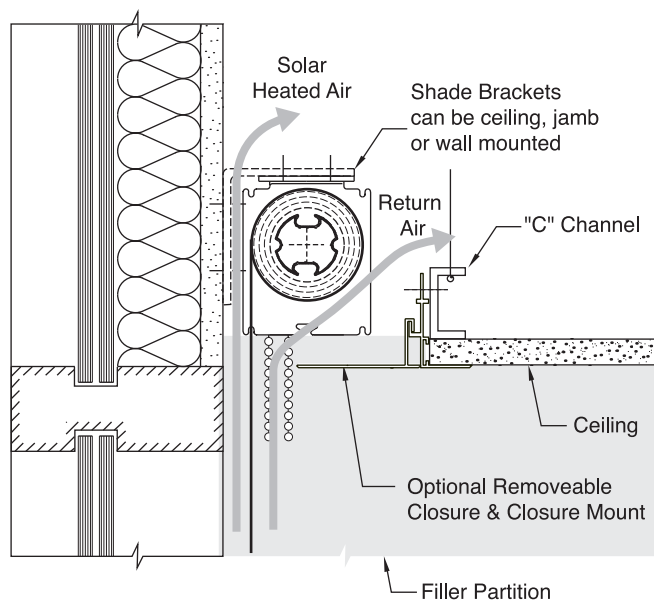
A “No Cost Pocket” can be made by installing an optional closure and closure mount to blocking just above the ceiling grid. The shade bracket is wall, jamb or ceiling mounted above the opposite window wall.

**This diagram is for example only and is not to be used as an installation guide.** For proper installation instructions, detailed site specific shop drawings are necessary.

Contact MSS Estimating Department, CAD or Engineering departments to obtain proper shop drawings.

## Optional Sound Stop

A 1" (25mm) fiberglass sound stop can be installed between shade brackets above partitions to help reduce noise between work areas.



MechoShade Systems, Inc.  
42-03 35th Street, Long Island City, NY 11101  
Telephone: 718-729-2020  
Fax: 718-729-2941 / 800-899-8081

E-mail: [info@mechoshade.com](mailto:info@mechoshade.com)  
Internet Web Site: [www.mechoshade.com](http://www.mechoshade.com)

2.18  
MS2200 - 01/01/08



# Typical Bay with Building Standard Partitions

